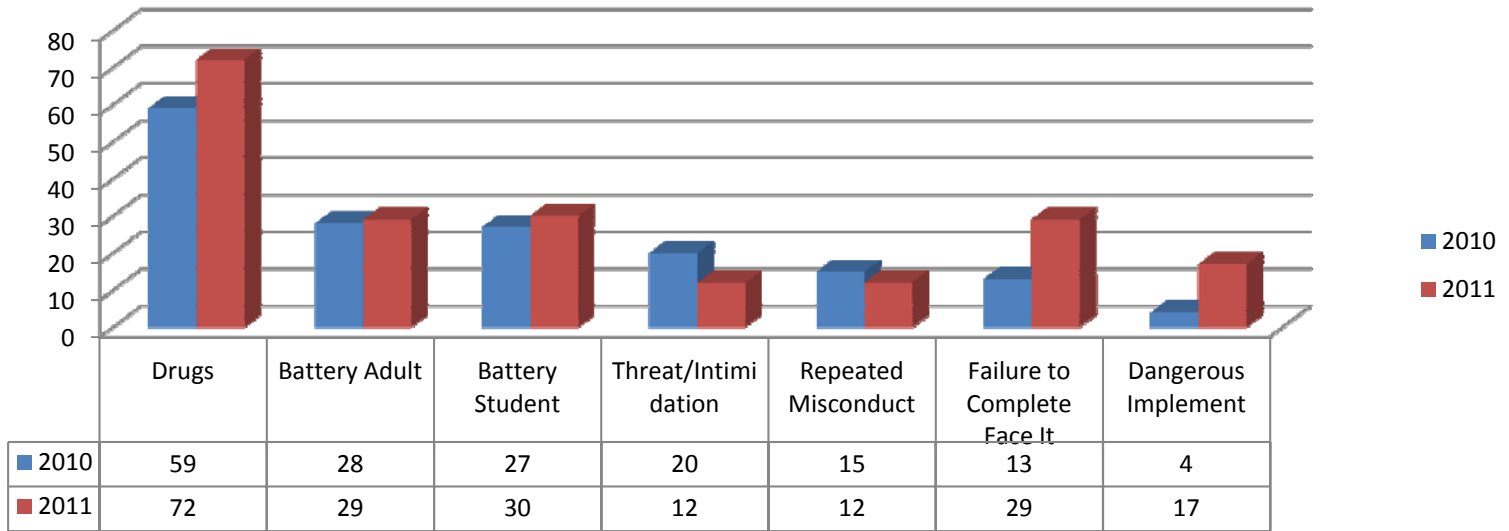
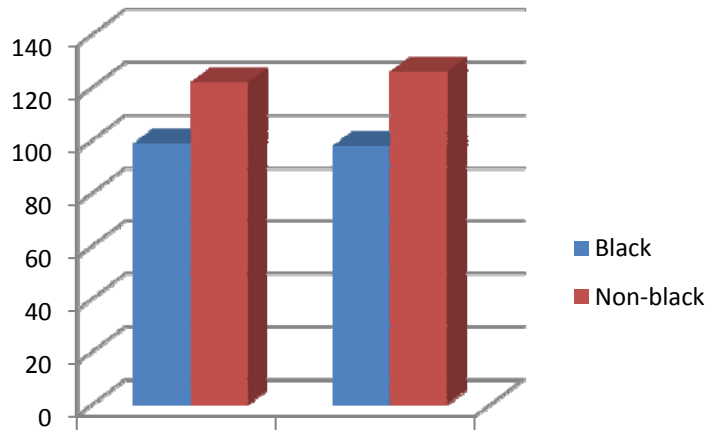


First Semester Reassignment Comparison 2010/11 to 2011/12 Most Frequent Reasons

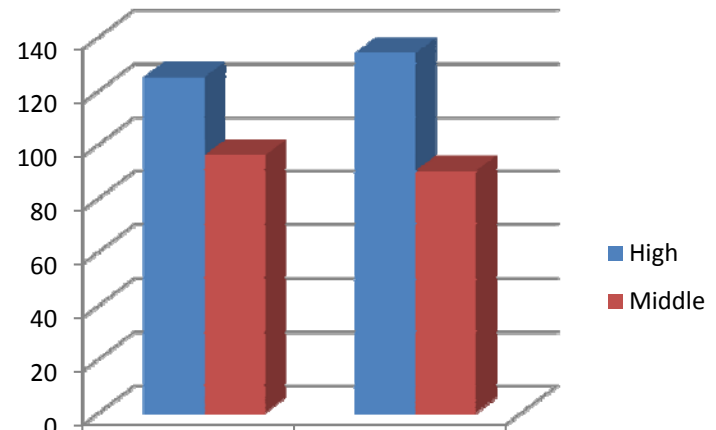


**First Semester Reassignment Comparison
2010/11 to 2011/12
Black/Non-Black**



Black	2010 99	2011 98
Non-black	122	126

**First Semester Reassignment Comparison
2010/11 to 2011/12
School Levels**



High	2010 125	2011 134
Middle	96	90